

To Register

Online

www.jud.ct.gov/lawlib



Or Call

Judge Support Services
Superior Court Operations
860-706-5140



Registration confirmation
will be provided

Register Early... Space
is Limited!

Session Information

November 17, 2015

2:00 - 4:00 PM

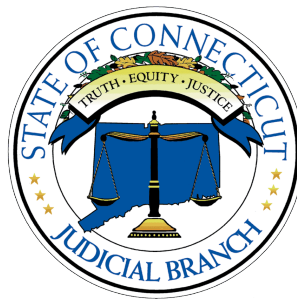
*New Haven Superior Court
Courtroom 4E*

November 23, 2015

2:00 - 4:00 PM

*Stamford Superior Court
Jury Assembly Room*

The Judicial Branch of the State of Connecticut complies with the Americans with Disabilities Act (ADA). If you need a reasonable accommodation in accordance with the ADA, please indicate so when registering.

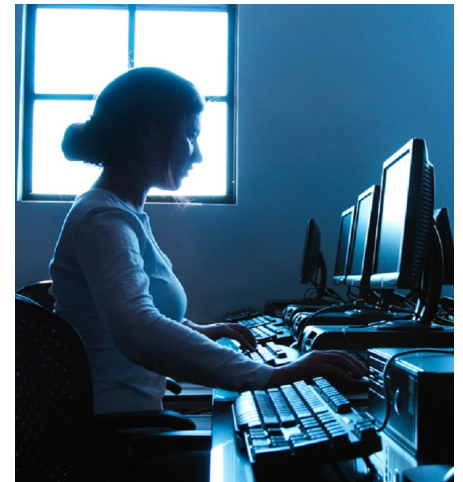


WWW.JUD.CT.GOV

**FOR NEW AND
EXPERIENCED
ATTORNEYS**

**ONLINE LEGAL
RESEARCH
AVAILABLE AT THE
JUDICIAL BRANCH
LAW LIBRARIES**

Training Session



**REGISTRATION
INFORMATION
INCLUDED**

An Opportunity for New and Experienced Attorneys

All practitioners today, whether experienced or new to the practice of law, must incorporate online legal research into their practices. The subscription costs to these online services, however, can be burdensome, especially to small and solo practices. This program will highlight several of the online legal research services available at the Judicial Branch Law Libraries. It will provide you with basic information that will allow you to access and use these services. The knowledge gained from this program will assist you in your practice of law in the Connecticut courts. We are pleased to welcome you to our courthouse and to our program.



Chief Court Administrator
Patrick L. Carroll III, Judge



About the Judicial Branch Law Library Services Unit's Online Legal Research Services

The Judicial Branch Law Library Services Unit offers access to a wide range of online legal research services and resources. These services are available to all law library patrons within our facilities. This training session will introduce you to three of these services: LoislawConnect, Lexis / Shepard's, and WestlawNext.

This training session will offer a brief overview of the three services. For each service, we will look at the content of the database; how to retrieve a known document; how to construct and execute a search; how to navigate the database; how to print, copy, and email documents; and other specific features.

LoislawConnect

LoislawConnect is an online legal research service offered by Wolters Kluwer, Inc. This service provides access to primary law for Connecticut, federal, and all 50 states.

For Connecticut, LoislawConnect provides the official versions of the Connecticut Reports, the Connecticut Appellate Reports, the Connecticut General Statutes, and the Connecticut Practice Book, including copyrighted headnotes, summaries, annotations, and comments.

Lexis Advance / Shepard's

The Judicial Branch Law Library Services Unit's Lexis Advance service offers access to primary legal resources for Connecticut, federal, and all 50 state jurisdictions. The service includes LexisNexis editorial annotations for primary resources such as statutes and cases. It also offers access to selected analytical materials for limited legal topic databases, including personal injury, workers' compensation, and employment law.

Access to the Lexis Advance service includes the Shepard's citator service.

WestlawNext

WestlawNext is the new research platform offered by Westlaw. The service provides access to primary and secondary resources for Connecticut, federal, and all 50 states. Included are some well-known West publications such as ALR's, Restatements of the Law, American Jurisprudence, and selected treatises. For Connecticut, access to the Connecticut Practice Series, containing the Connecticut Practice Book Annotated, and the Connecticut Estate Practice Series is included.

Other Westlaw features are available, such as the Key Number System, and the KeyCite citator service.